

Continental Access

A Napco Security Group Company



CardAccess 3000 Workstation Upgrade V2.9.x

REVISION – Rev A

DATE: 08/29/2012

CardAccess® 3000 



DISCLAIMER

Continental Instruments LLC makes no representations or warranties with respect to the contents hereof and specifically disclaim any implied warranties of merchantability or fitness for any particular purpose. Further, Continental Instruments LLC reserves the right to revise this publication and to make changes from time to time in the content hereof without obligation of Continental Instruments LLC to notify any person of such revision or changes.

Copyright © 2012 by Continental Instruments LLC. All rights reserved. No part of this publication may be reproduced, transmitted, transcribed, or stored in a retrieval system, without the prior written permission of Continental Instruments LLC, 355 Bayview Avenue, Amityville, NY 11701. Telephone: 631-842-9400 • FAX: 631-842-9135 • GSA# GS-07F-0039H.

This document contains proprietary information of NAPCO Security Technologies. Unauthorized reproduction of any portion of this manual without the written authorization of NAPCO Security Technologies is prohibited. The information in this manual is for informational purposes only. It is subject to change without notice. Companies, names and data used in examples herein are fictitious unless otherwise noted. NAPCO Security Technologies assumes no responsibility for incorrect information this manual may contain.

A NAPCO SECURITY TECHNOLOGIES COMPANY

Publicly traded on NASDAQ Symbol: NSSC

Visit our websites at

<http://www.cicaccess.com/>

<http://www.napcosecurity.com/>

<http://www.alarmlock.com/>

Table of Contents

Important Information - Must Read Prior To Starting Installation	1
Computer Specifications	2
Scope / CardAccess 3000 Workstation Upgrade	3
Client Configuration Utility.....	11
Readme	12

Important Information - Must be read before installing software.

- 1) This document pertains to a CardAccess 3000 workstation upgrade.
- 2) Prior to upgrading, refer to the CardAccess 3000 computer specifications to verify the computer meets the specifications for a CardAccess 3000 V2.9.x workstation.
- 3) Prior to starting the upgrade, verify you have FULL ADMINISTRATOR permissions with no restrictions.
- 4) The installation of a CardAccess 3000 Workstation requires a valid V2.9 security key/license on the CardAccess 3000 Server/Host. The security key/ license must support 5 or more workstations. If the security key displays “max workstations =1”, CardAccess 3000 workstations or Web clients are not supported.
- 5) Verify the version of CardAccess 3000 on the workstation is the same version as the CardAccess 3000 host computer.
- 6) If Badging 3000 (EPI) is currently licensed and installed on the workstation being upgraded, **DO NOT** REVOKE THE EPI LICENSES OR REMOVE THE BADGING 3000 SOFTWARE.
- 7) You **MUST** have FULL ADMINISTRATOR permissions to install and execute integration features (EPI, DVR, NAPCO, Wireless Locks).

CA3000 v2.9.x Workstation PC Recommendations

	Workstation-Event Viewing Only	Workstation-Event Viewing + any one Integration feature (Badging, DVR/NVR, Napco, Scripting, or Dynamic Maps)	Workstation-Event Viewing + any two Integration features (Badging, DVR/NVR, Napco, Scripting, or Dynamic Maps)
Processor	Pentium Core2 Duo, 2.2GHz min	Pentium Core2 Duo, 2.6MHz min	Dual Pentium Core2 Duo, Pentium Quad Core or Pentium Xeon
Ram	2 GB Min	3 GB + Min	3 GB +
Hard Drive	80 GB min	160 GB min	250 GB min
USB Ports	2	4	4
Serial Ports	N/A	N/A	N/A
Parallel Ports	1	1	1
Mouse	PS2 or USB	PS2 or USB	PS2 or USB
Monitor	17" (1024 x 768) min	17" (1024 x 768) min	17" (1024 x 768) min
DVDROM	48x/16x	48x/16x	48x/16x
DVDR	24x/4x Optional	24x/4x Optional	24x/4x Optional
Sound	Recommended	Recommended	Recommended
Network Card	100 NIC Ethernet minimum	100/1000 NIC Ethernet	100/1000 NIC Ethernet
Operating System	Win XP Pro w/SP3, Win 7 Pro w/ SP1 32/64 bit, Win 2003 Server R2 w/SP2 32/64 bit or Win 2008 Server R2 w/SP2	Win XP Pro w/SP3, Win 7 Pro w/ SP1 32/64 bit, Win 2003 Server R2 w/SP2 32/64 bit or Win 2008 Server R2 w/SP2	Win XP Pro w/SP3, Win 7 Pro w/ SP1 32/64 bit, Win 2003 Server R2 w/SP2 32/64 bit or Win 2008 Server R2 w/SP2
Database	N/A	N/A	N/A
Backup	N/A	N/A	N/A
Notes:	*** Salient Analog Capture cards are not supported on 64 bit operating systems.	For large corporations, hospitals or colleges, a frame video capture card and high-end digital camera is recommended on a badging station. Depending on the amount of photo's needed to be taken per-day on a Badging station; or for other functions the number of DVRs/NVRs or Napco Panels Integrated; or the number of Scripts or Dynamic Maps running additional RAM may be required.	

Scope

This document contains information regarding the upgrade to CardAccess 3000 V2.9.x. This procedure does not include the installation of the EPI Badging 3000. If the EPI Badging 3000 is already installed and the licenses are activated, **DO NOT** revoke the EPI licenses and **DO NOT** select to install the Badging3000.

VERY IMPORTANT: The screenshots in this document is for a CardAccess 3000 upgrade on a **Windows 7 – 64 bit computer**. The following screen shots will vary if the upgrade is being performed on a 32 bit computer or another supported operating system.

CardAccess 3000 Workstation Upgrade

If auto start is enabled on your system, the **Auto Play** screen will display after inserting the CA3000 DVD in the DVD drive (Refer to Figure 1). Click **“Run Launch.exe”**. Verify the **CardAccess 3000 Version 2.9 Setup** screen displays (refer to figure 3). Skip ahead to the steps following Figure 3.

Warning: If auto start is not enabled on your system, nothing will occur after inserting the CA3000 DVD. Follow the steps below to execute the program.

Click the **Start** menu on your PC. In the **Search Programs and Files** box or the **Start/Run**, type **d:\launch.exe** (Refer to Figure 2). After pressing ENTER, the **CardAccess 3000 Version 2.9 setup** screen will display (Refer to Figure 3).

Note: “d:” represents the DVD drive letter. This letter will be different depending on the drive letter of your DVD.



Figure 1.



Figure 2.



Figure 3.

Click on the **Install CardAccess 3000** button. The CardAccess 3000 Prerequisites will be installed if they are not currently on the computer. While performing an upgrade, most of the prerequisites should already be installed.

Prerequisites

NOTES:

- There can be up to seven prerequisites required to be installed. Older supported operating systems will require more prerequisites to be installed (refer to figure 4).
- Prior to this upgrade, this computer already contained the “Microsoft .NET Framework 4.0”, “ADH Source Filter for Direct Show” and “Visual C++ Runtime Libraries”. These do not have to be installed and will not be listed in the prerequisites box. If these or other prerequisites need to be installed, follow the prompts and click **Install** on each.
- During the installation of the prerequisites, the computer might require a reboot. If you are prompted to reboot, click **Yes** or **OK** (Refer to figure 6). After the computer reboots, the CardAccess 3000 setup program must be restarted again (Refer to figures 1, 2, and 3).

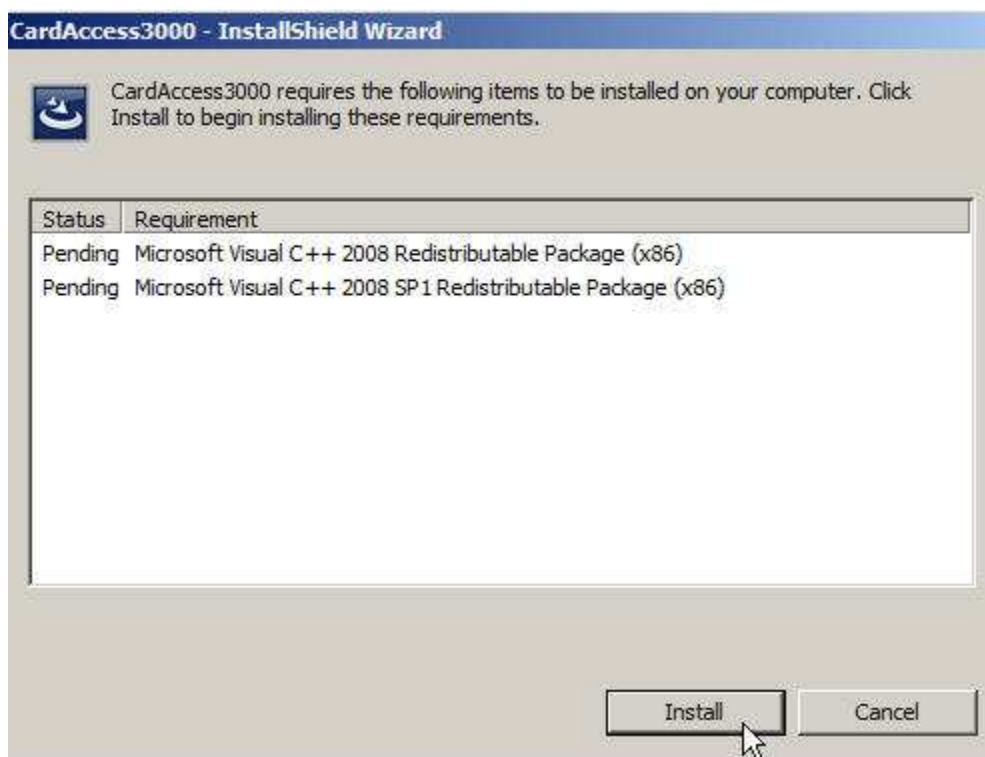


Figure 4.

Click **Install**. The first prerequisite in the list will install. After the installation begins, a progress bar will display while the prerequisites are installing (Refer to figure 5).

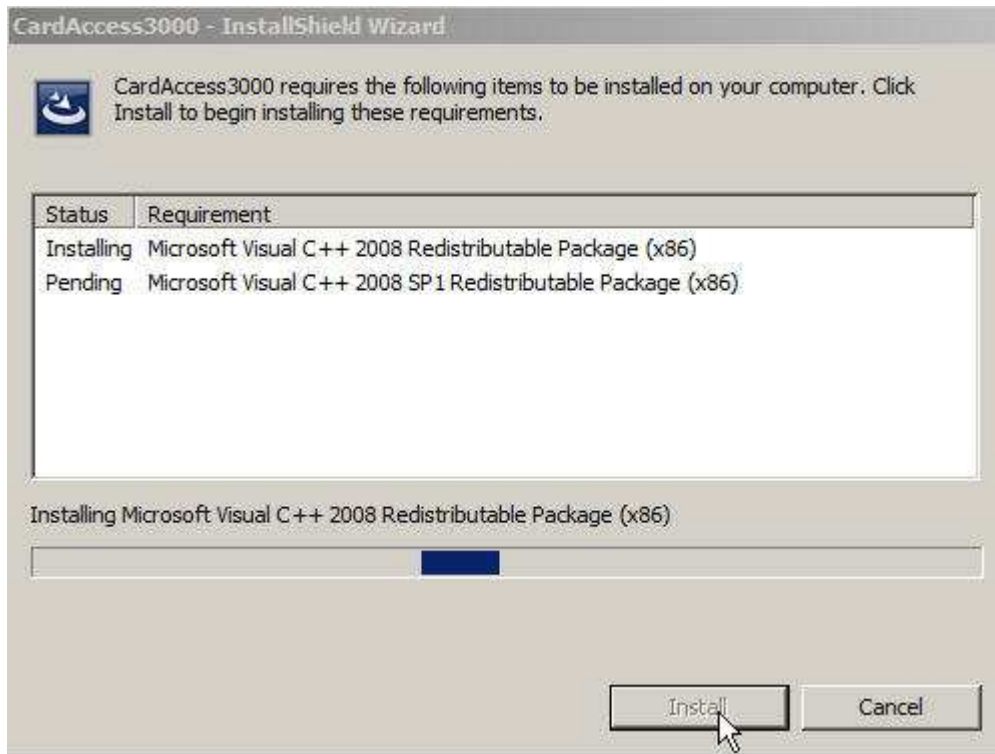


Figure 5.

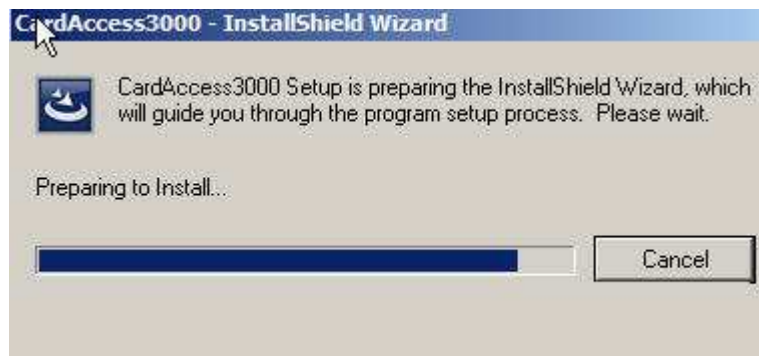


Figure 6.



Figure 7.

During the installation of the prerequisites, a message will display at various times stating the setup must be manually restarted. Click **OK**.

CardAccess 3000 Upgrade

After the prerequisites are installed, the Welcome to CardAccess 3000 Setup program screen will display (Refer to figure 8).

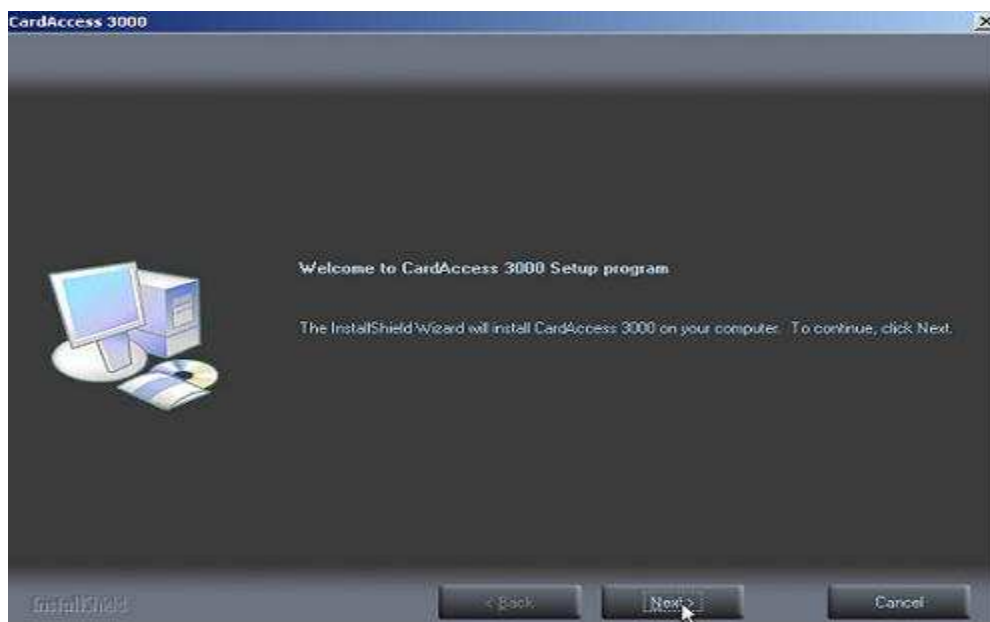


Figure 8.

Click **Next**. The **Setup Type** screen will display (Refer to Figure 9).

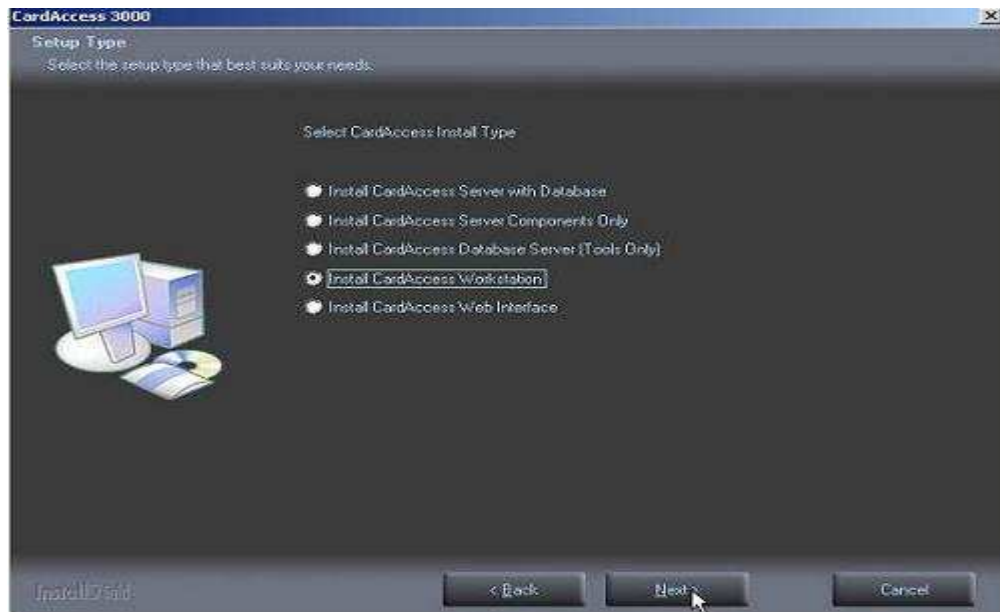


Figure 9.

Select **Install CardAccess Workstation**. Click **Next**. The **Select CardAccess Destination Folder** screen will display (Refer to figure 10).

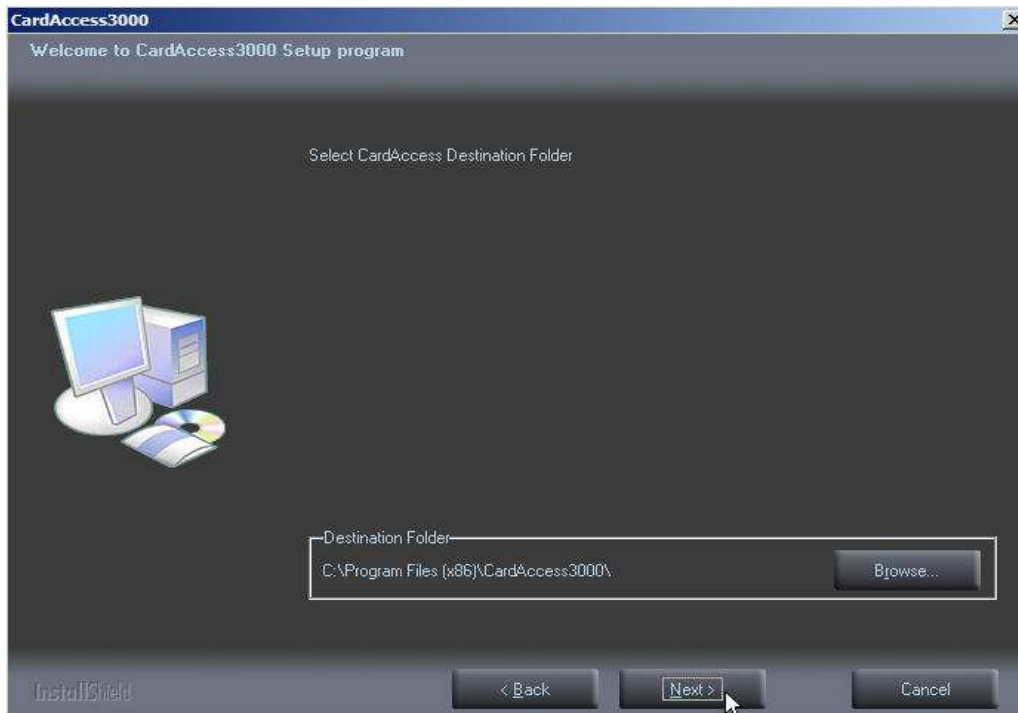


Figure 10.

Click **Next**. The **Select Additional CardAccess components to install** (Refer to figure 11).

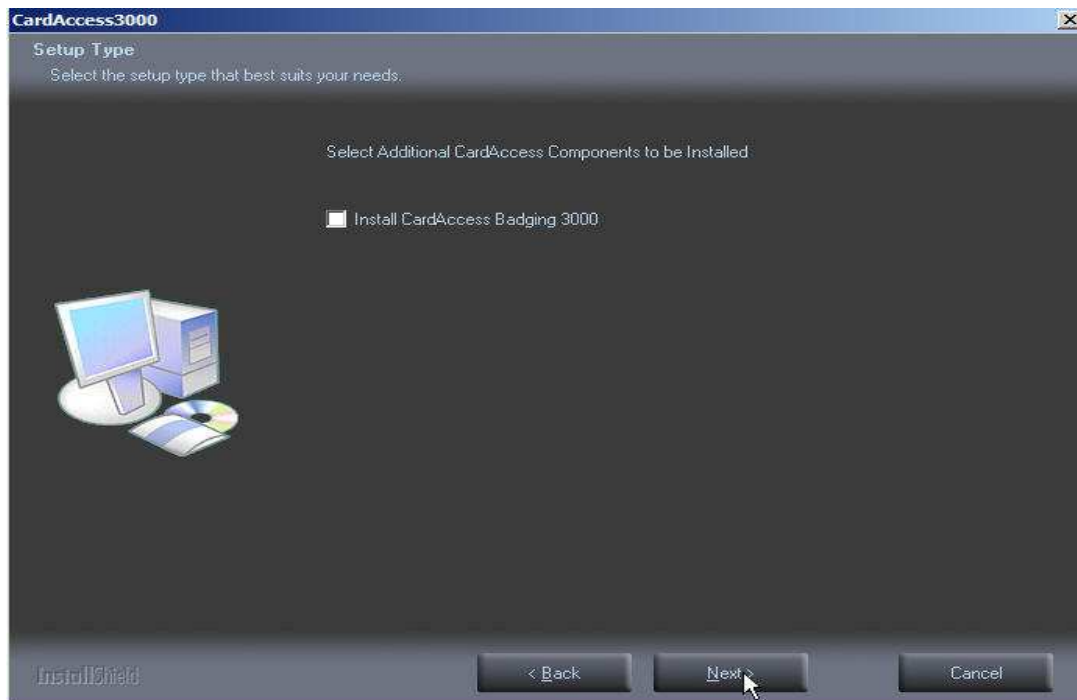


Figure 11.
VERY IMPORTANT: As previously noted, **DO NOT** select this option if EPI Badging3000 is already on the computer prior to the upgrade. Click **Next**. The **Current Settings** screen will display (Refer to figure 12).

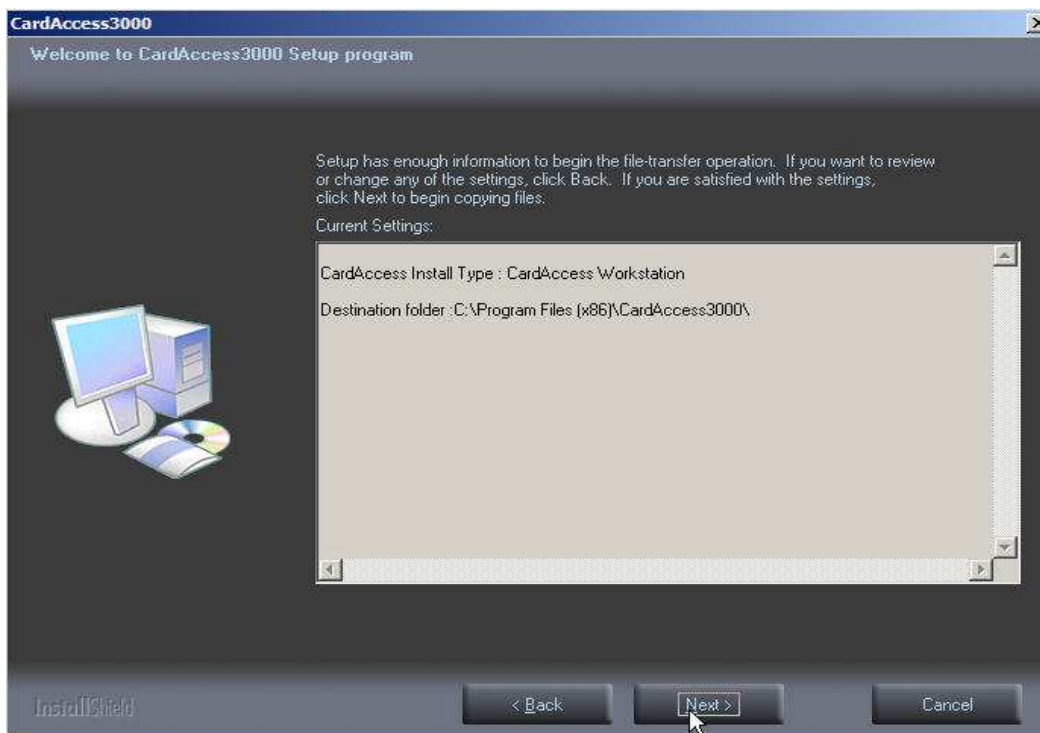


Figure 12.

Note: The destination folder will be different on a 32 bit computer.

After reviewing the current settings, click **Next**. A progress bar will display while the CardAccess 3000 is installing (Refer to figure 13).

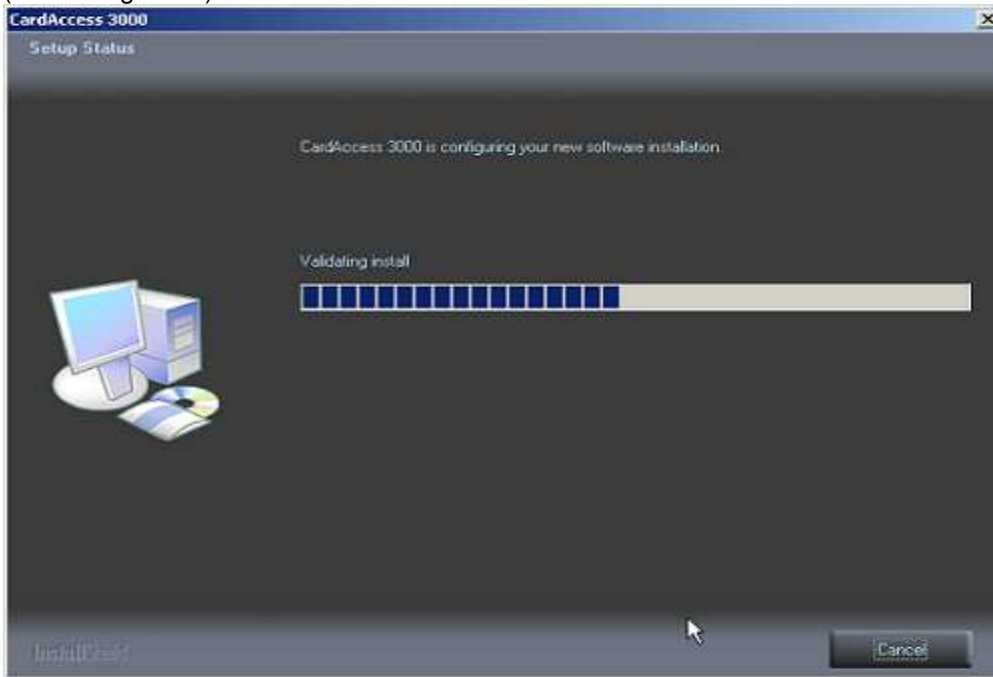


Figure 13.

After the setup, the Client Connection utility screen will display (Refer to figure 14).



Figure 14.

WARNING: If the following settings are not configured properly, the CardAccess 3000 will fail to launch.

- Server IP Address – You must configure this to the IP address of the CardAccess 3000 Server/Host.
- Server Port – This should be 9000 by default
- Workstation Selection – Select an available workstation number (Do not leave this at Host PC).

After all the configuration settings are correct, click **Save Settings** (Refer to figure 15).

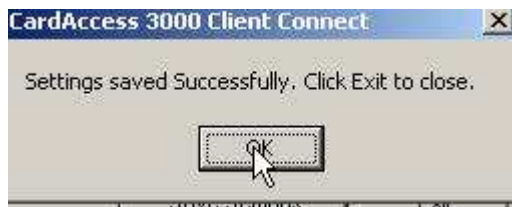


Figure 15.

Click **OK**. CardAccess 3000 **Readme Information** screen will display (Refer to figure 16).

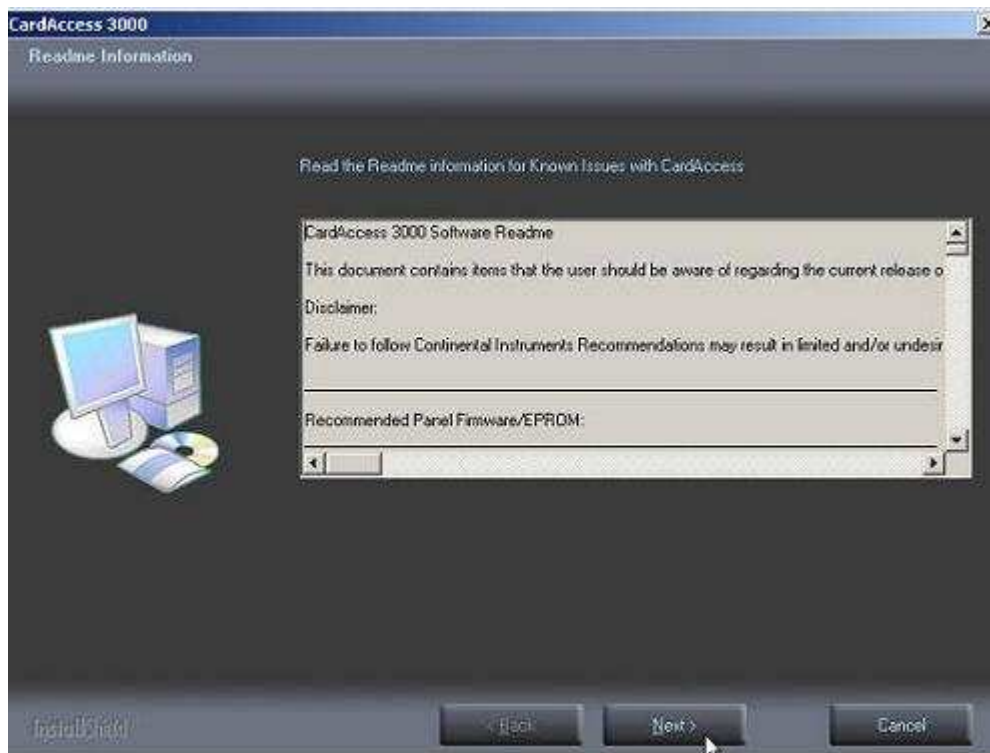


Figure 16.

After reviewing the CardAccess 3000 Software Readme, click **Next**. The **InstallShield Wizard Complete** screen will display (Refer to figure 17).

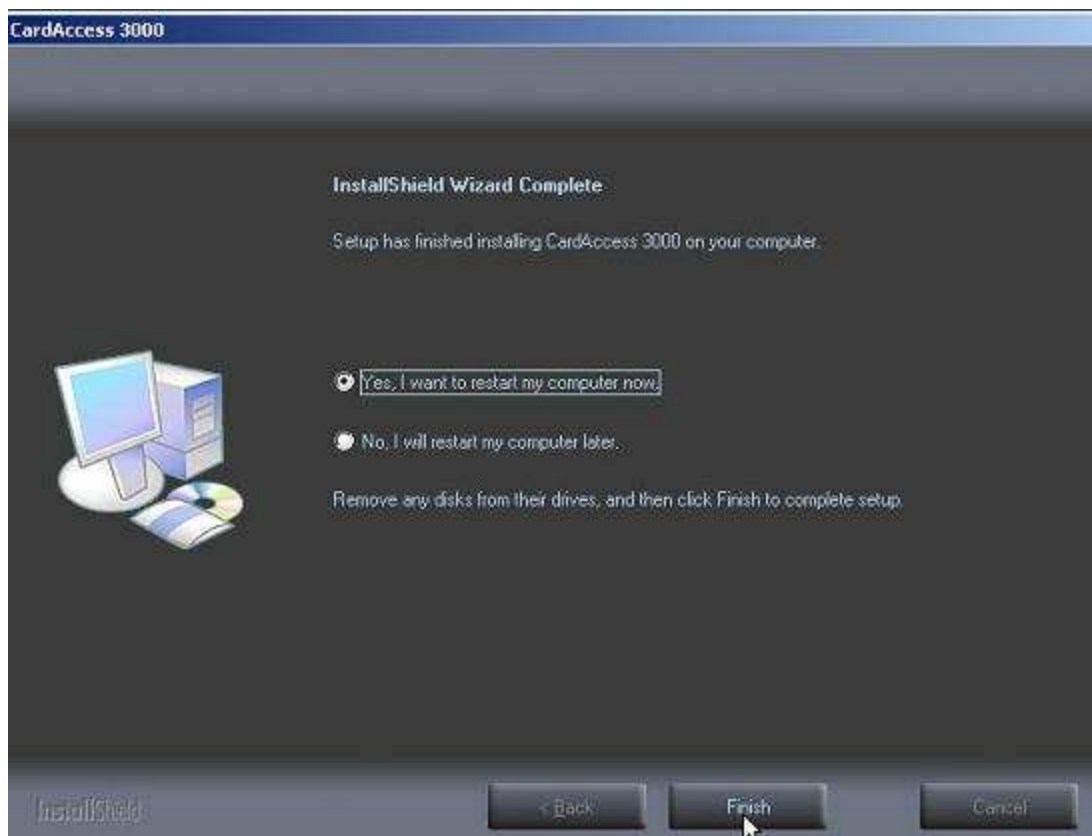


Figure 17.

Select the **Yes, I want to restart my computer now** option. This should be selected by default.

The CardAccess 3000 upgrade is now complete.